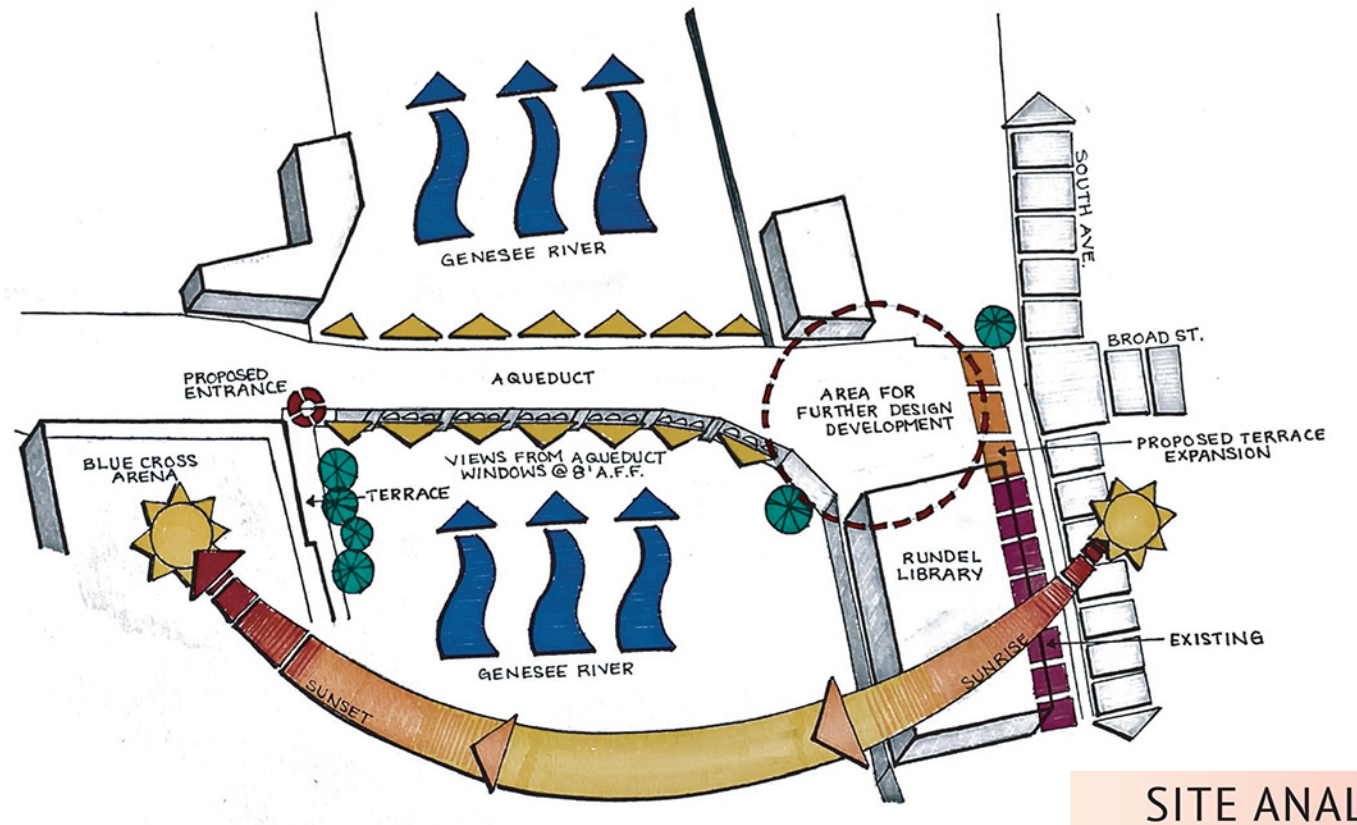


ROCQUEDUCT

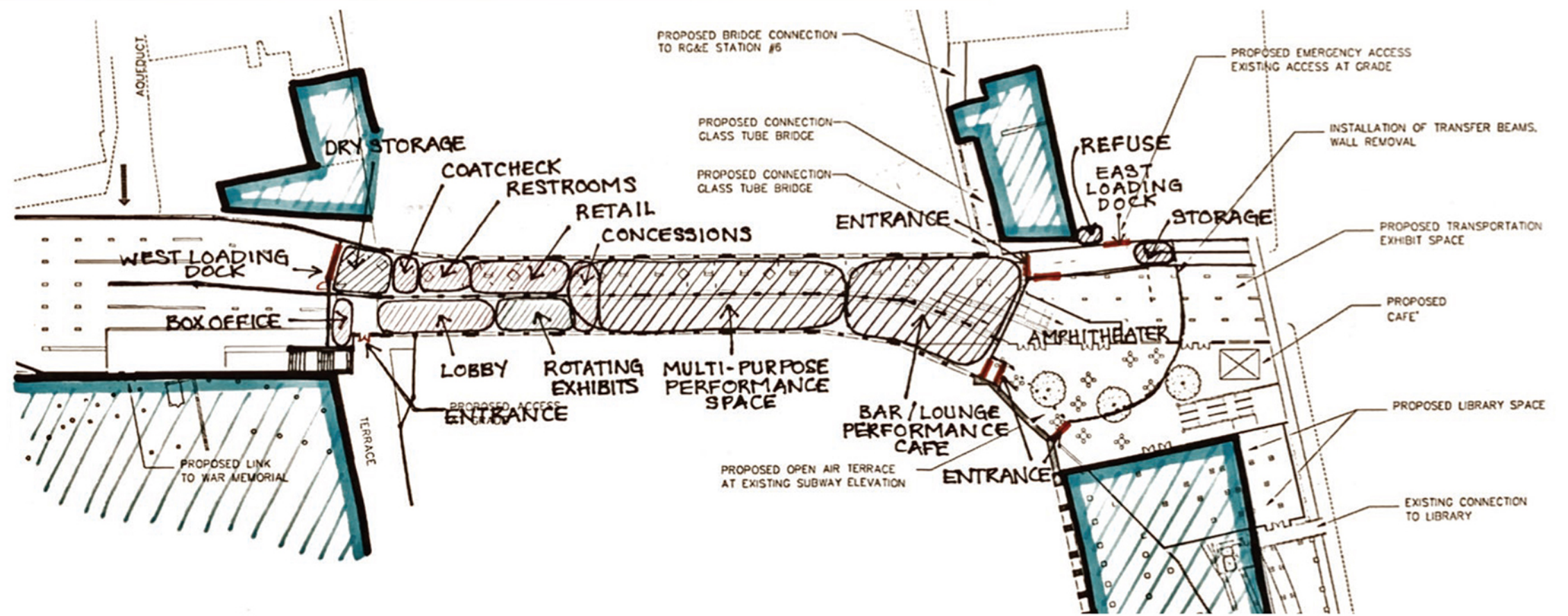
The Old Rochester Aqueduct was built in 1840 to allow the Erie Canal to cross the Genesee River. However, in the 1920's, the Aqueduct was abandoned and reconstructed to house the Rochester Subway and the current overhead bridge known as Broad Street.

In an effort to grant the public more access to the Genesee River, the Rochester Aqueduct and the Broad Street Bridge will undergo a redevelopment plan that will transform the interior and exterior to a public performance venue that reflects upon Rochester's rich culture. The historical context of the site will unite with Rochester's current aesthetic to generate a transitioning environment that is both engaging and unforgettable for all generations.

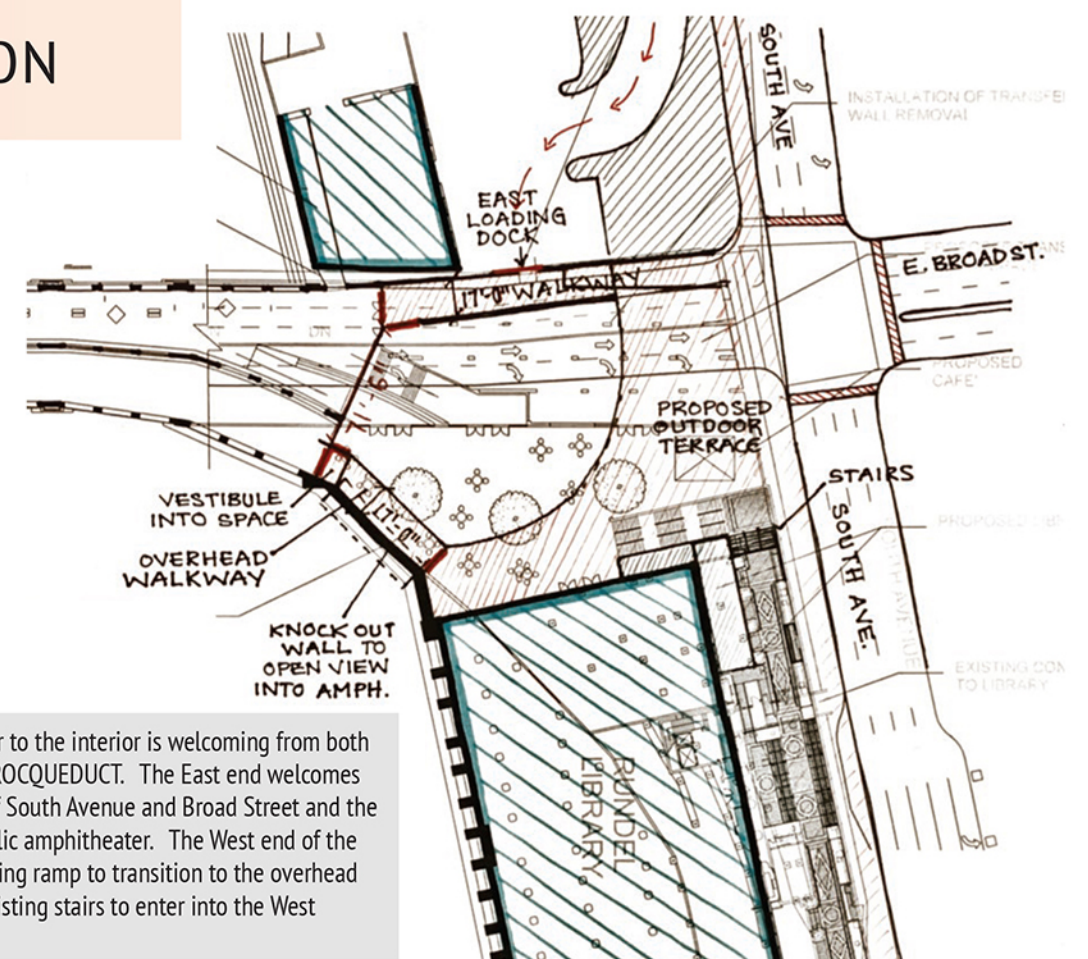
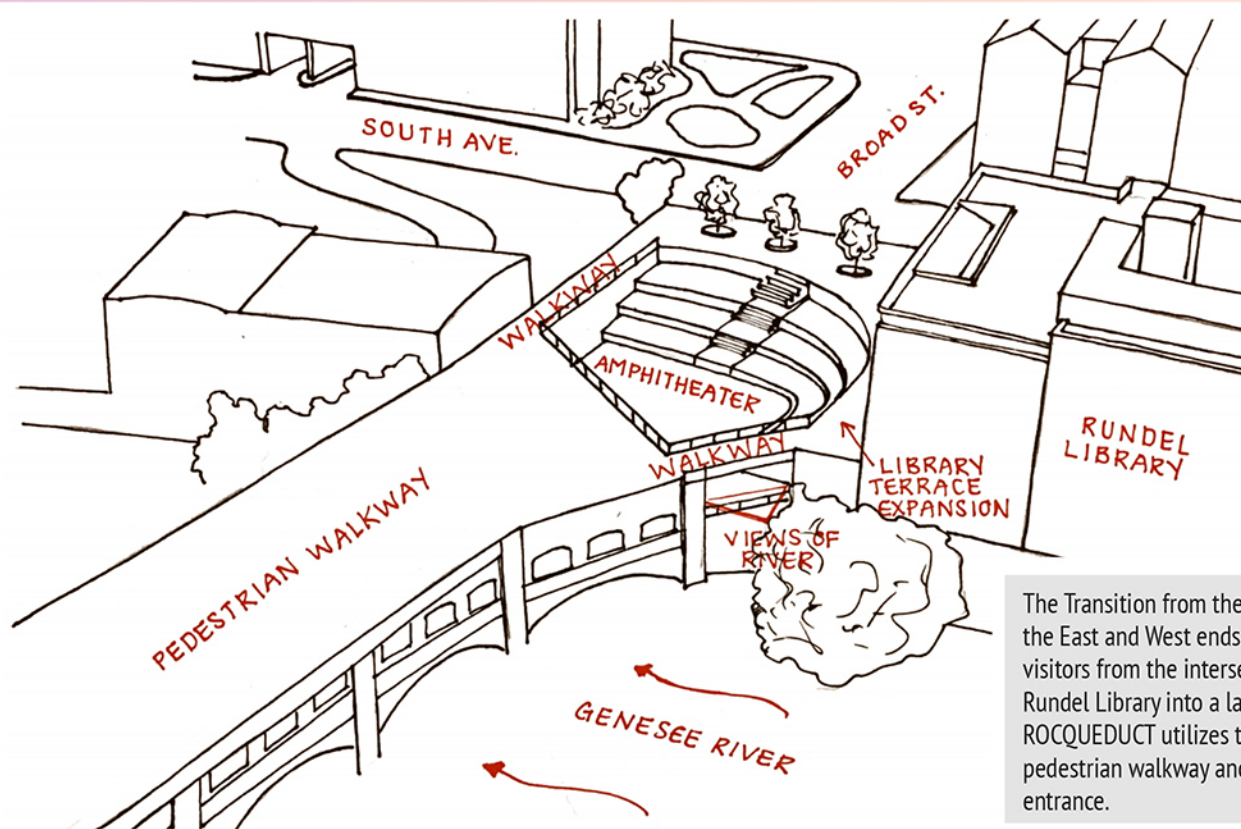


SITE ANALYSIS

BUBBLE DIAGRAM & BUILDING / SITE CIRCULATION



INTERIOR URBANISM SITE / LOBBY TRANSITION



The Transition from the exterior to the interior is welcoming from both the East and West ends of the ROCQUEDUCT. The East end welcomes visitors from the intersection of South Avenue and Broad Street and the Rundel Library into a large public amphitheater. The West end of the ROCQUEDUCT utilizes the existing ramp to transition to the overhead pedestrian walkway and the existing stairs to enter into the West entrance.

BROAD STREET SITE RENDERING



BROAD STREET

In efforts to increase the popularity of downtown Rochester, the interior of the aqueduct will be transformed into a venue space for retail shops, restaurants, cafes, exhibition spaces, and performance spaces.

The exterior of the aqueduct, which is currently Broad Street, will be transformed into a public walkway where visitors or residents of Rochester will be able to relax and enjoy the view of the Genesee River.

The west ramp up to Broad Street will be renovated; the northern half of the ramp will be deconstructed and a loading dock will be placed for an entrance into the backstage of the performance space. The southern half of the ramp will be renovated to a pedestrian route/road up to the broad street pedestrian walkway. This route is large enough for vehicles (such as food trucks) to drive onto the top of broad street.

EXTERIOR VIEW @ DAY

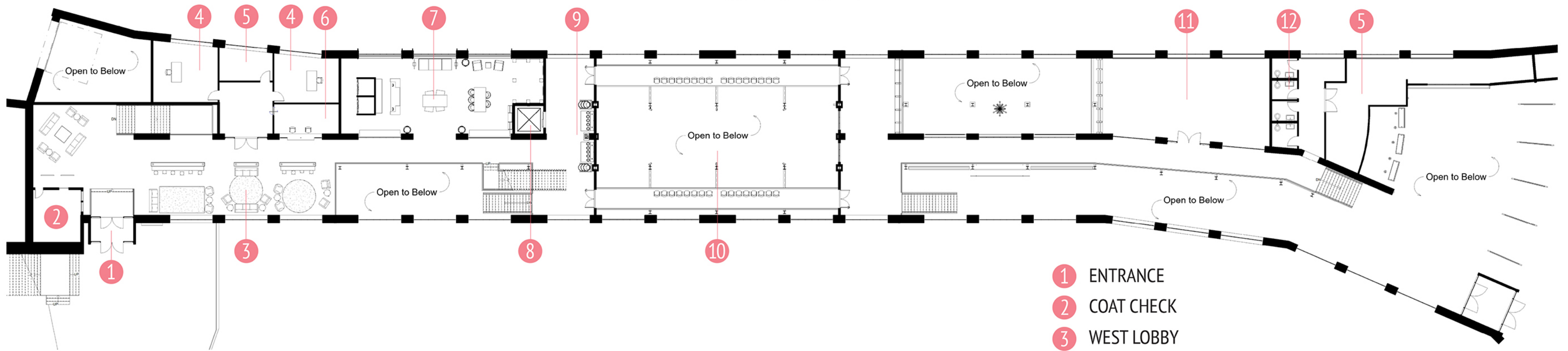


EXTERIOR VIEW @ NIGHT



UPPER LEVEL FLOOR PLAN

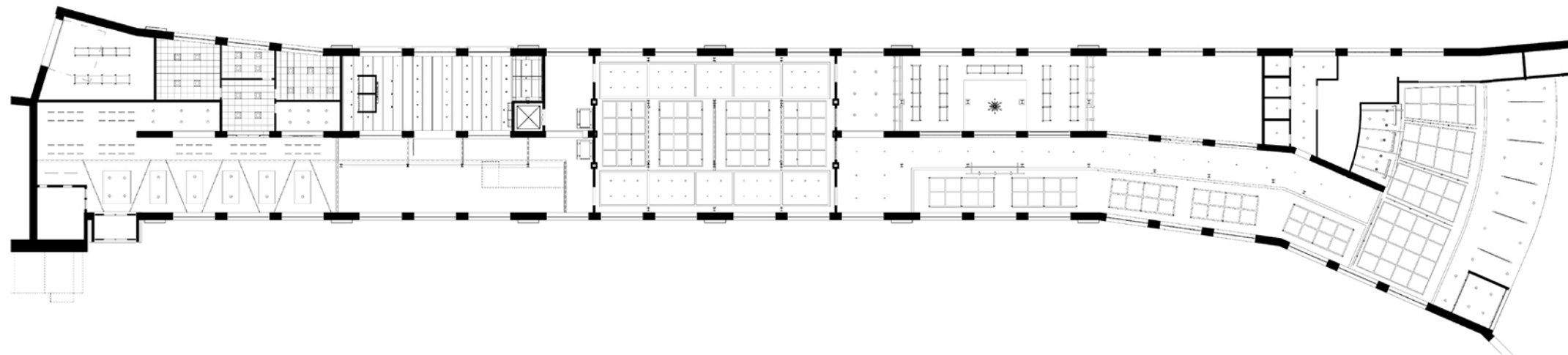
SCALE : 1" = 12'-0"



- 1 ENTRANCE
- 2 COAT CHECK
- 3 WEST LOBBY
- 4 OFFICE
- 5 STORAGE
- 6 BOX OFFICE
- 7 RETAIL SPACE - THE ROC
- 8 ELEVATOR
- 9 MERCHANDISING KIOSK
- 10 PERFORMANCE SPACE
- 11 RETAIL SPACE - FUTURE EXPANSION
- 12 RESTROOMS

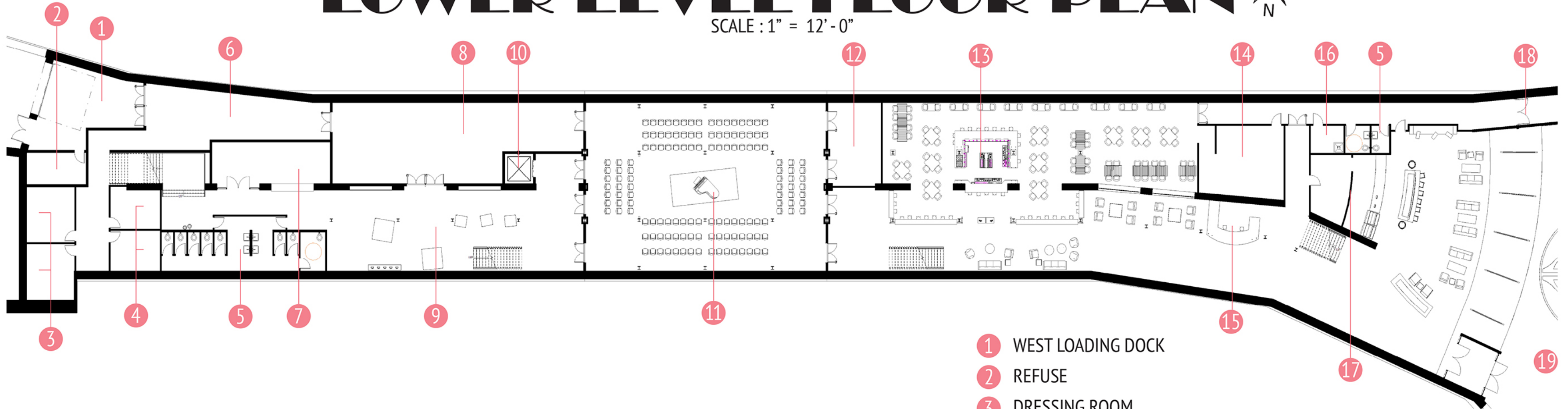
UPPER LEVEL REFLECTED CEILING PLAN

SCALE : 5/8" = 12'-0"



LOWER LEVEL FLOOR PLAN

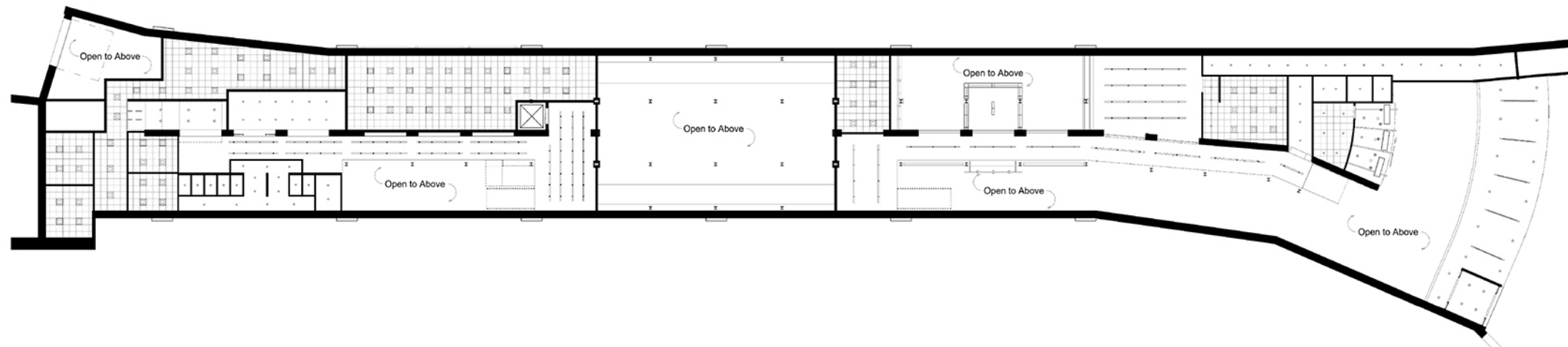
SCALE : 1" = 12'-0"



- 1 WEST LOADING DOCK
- 2 REFUSE
- 3 DRESSING ROOM
- 4 STUDIO
- 5 RESTROOMS
- 6 SCENIC WORKSHOPS
- 7 CONCESSIONS
- 8 EDUCATIONAL / MEETING SPACE
- 9 EXHIBITION SPACE
- 10 ELEVATOR
- 11 PERFORMANCE SPACE
- 12 STORAGE
- 13 RESTAURANT BAR / LOUNGE
- 14 RESTAURANT KITCHEN
- 15 BOX OFFICE
- 16 JANITORIAL CLOSET
- 17 CAFE at the ROCQUEDUCT
- 18 EAST LOADING DOCK
- 19 OUTDOOR AMPHITEATER

LOWER LEVEL REFLECTED CEILING PLAN

SCALE : 5/8" = 12'-0"

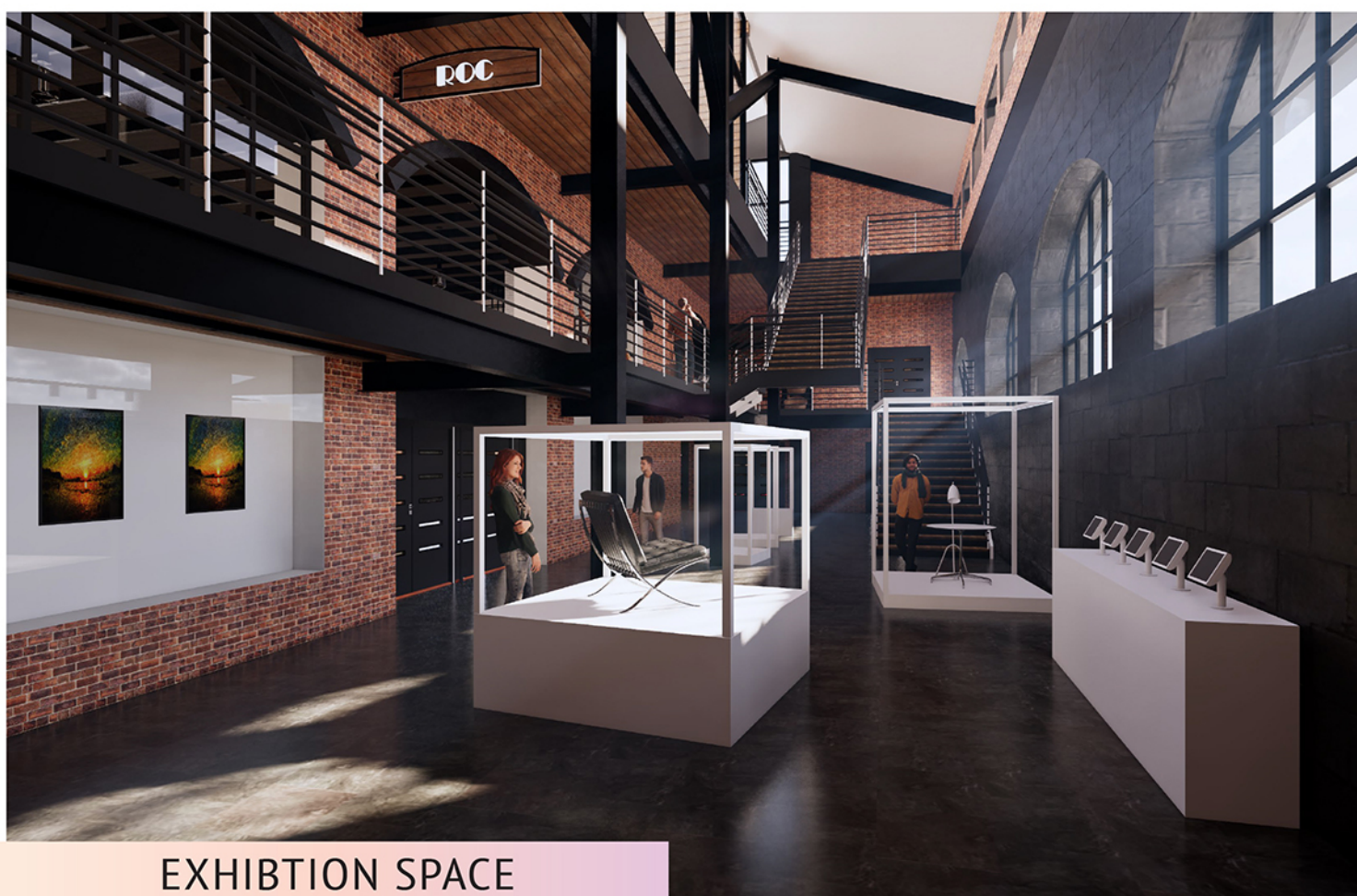




WEST ENTRANCE / BOX OFFICE

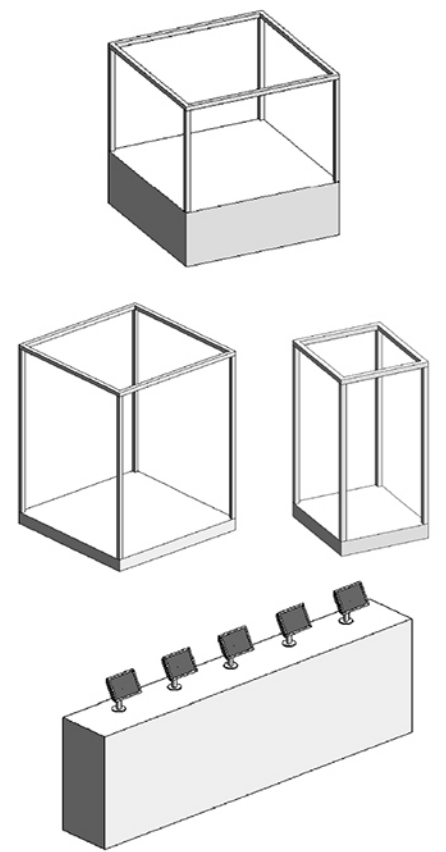


RETAIL STOREFRONT



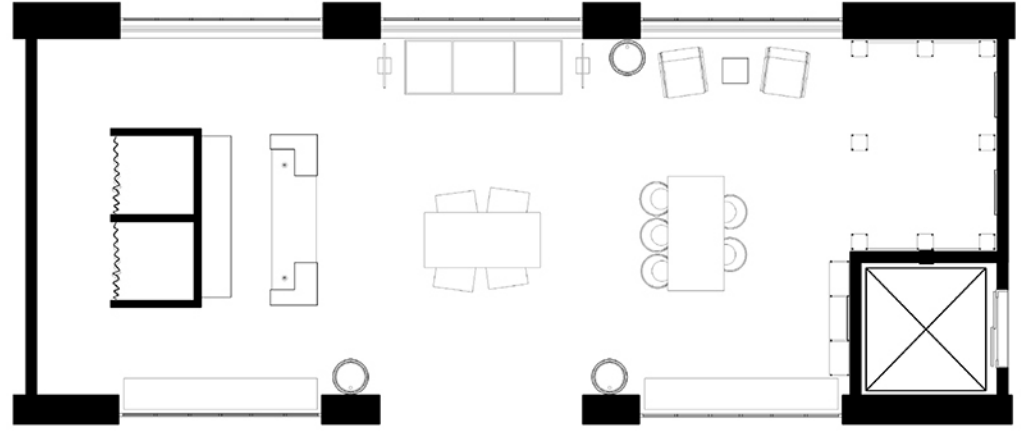
EXHIBITION SPACE

EXHIBITION DISPLAYS



the ROC

The ROC retail space, located on the west side of the ROCQUEDUCT, is the 'go-to' location for any Rochester, NY merchandise. Merchandise items include, shirts, sweatshirts, hats, souvenirs, and more. The ROC is also a location where local Rochester vendors can sell their work for profit.



RETAIL INTERIOR



RETAIL INTERIOR

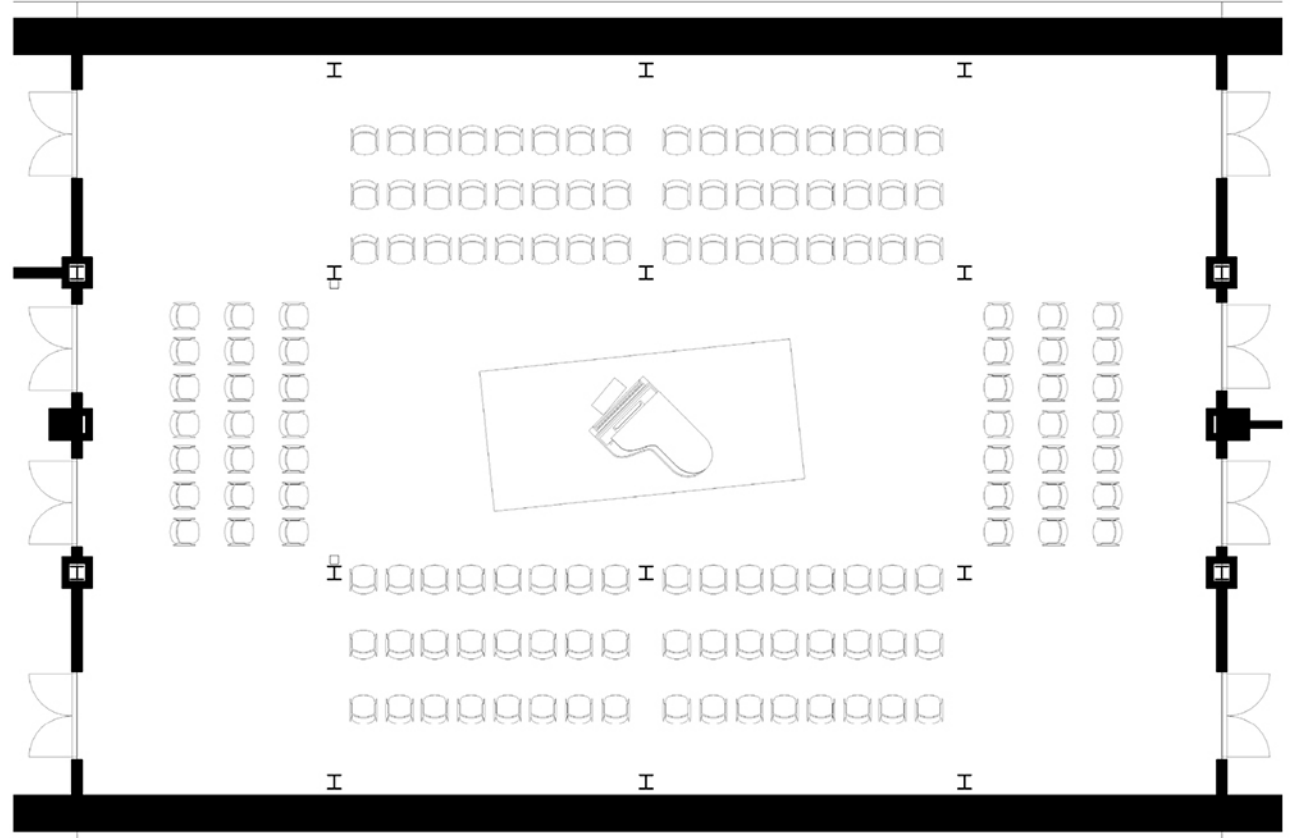
THE PERFORMANCE SPACE

TOTAL SEAT COUNT: 138 (Additional 36 seats along Upper Level bridges)

The performance space is located in the center of the ROCQUEDUCT. The main floor of the performance space is on the lower level and there are two bridges that connect the west and east sides of the upper level (seating is available on both levels).

The middle arches were deconstructed from the interior of the performance space to create a more open space to engage the guests from each angle of performances. The arches are replaced with steel beams that support the Broad Street level. The northwest door connects to the backstage and the northeast doors connect to a storage room to store tables, chairs, sets, etc..

A truss system is suspended from the ceiling that can support spot lights, suspended sets, and acrobatic performances.



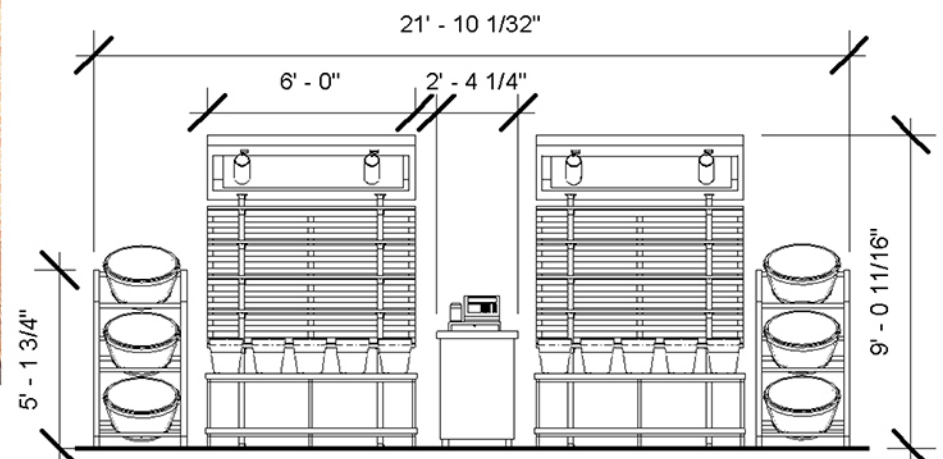
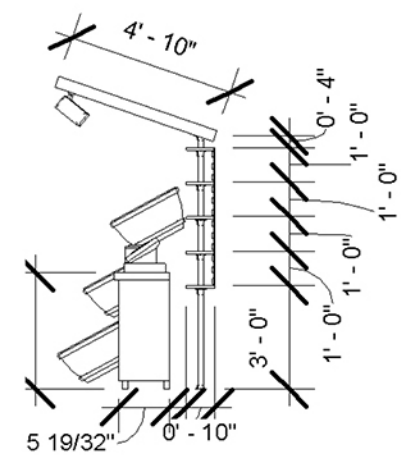
PERFORMANCE SPACE

MERCHANDISING KIOSK



The merchandising kiosk is located on the upper level floor outside the doors of the west side of the performance space. This kiosk is purposed to sell bouquets of flowers or merchandise sold by the performing groups during events.

The kiosk is modular with two flower barrel holders, two tables, buckets, a cash register, and a wooden shelving system with height-adjustable tension rods. This way, the kiosk can be easily moved to other locations inside the ROCQUEDUCT or stored away when not in use.





BAR / LOUNGE EXTERIOR

RESTAURANT

at the ROCQUEDUCT

RESTAURANT at the ROCQUEDUCT

TOTAL SEAT COUNT: 90 table-height seats / 37 bar-height seats

The Restaurant at the ROCQUEDUCT is located on the eastern side of the lower level. The style of the space is a take at an industrial modern location that will attract all generations. The unique architectural features such as the arches are utilized as entrances into the restaurant/bar area.

There is a 360 degree bar with seats all the way around and there are additional bar-height seats along the exterior boarder of the restaurant that guests can sit at. The tables and chairs are mobile to alter the table set up for larger parties.

NIGHT LIFE

Connection between the Bar and Performance Space

At night, the performance space could be altered into a venue for club DJ's. The bar is purposely located adjascent to the performance space to allow guests the opportunity to get drinks from the bar and dance in the performance space.

This type of venue will improve the Rochester nightlife and get people to stay in the city after 5pm. In return, it will create business for the restaurant.

BAR / LOUNGE INTERIOR





CAFE at the ROCQUEDUCT



EXTERIOR VIEW - EAST ENTRANCE

ROCQUEDUCT

Christopher Beckley

Rochester Institute of Technology
Interior Design - Spring 2019
Exhibition & Merchandising Design
Professor Kelly Jahn

